

# Assistant Principal Profiles

At Grande Yellowhead Public School Division, we are proud of the individuals who lead our schools and share their passion and innovation with the staff and youth they interact with on a daily basis. A strong school leader is someone who leads and models learning, supports a collaborative and reflective learning community, and one who makes child-focused decisions. Here is a peek at those strong leaders in your community!

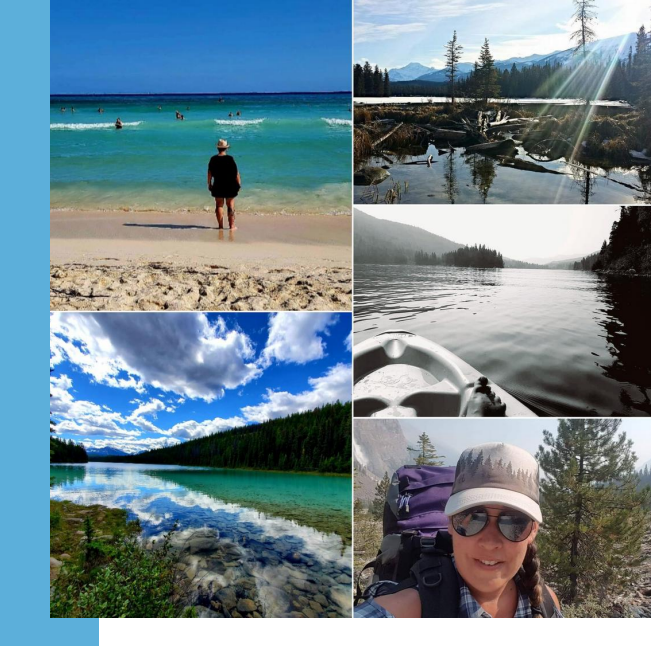
## 2023/2024



<p><b>Amanda Clarke</b> École Westhaven Elementary School JK to Grade 5 Montessori, English &amp; French Immersion Programs</p>	<p><b>Monica Sorensen</b> Mary Bergeron Elementary K to Grade 5</p>	<p><b>Kristin Basaraba</b> <b>Dual Campus Team</b> Parkland Composite High School Grades 9 to 12 English &amp; French Immersion Programs The Learning Connection Grades 1 to 12</p>	<p><b>Michelle Downing</b> École Pine Grove Middle School Grades 6 to 8 English &amp; French Immersion Programs</p>	<p><b>Ryan Hall</b></p>	<p><b>Shyla Locke</b></p>
---	---	---	---	-------------------------	---------------------------

**Amanda Clarke**

Amanda is excited to be joining École Westhaven Elementary as Assistant Principal. Amanda started her teaching career in 2010 at Parkland teaching in the Math, Science, CTS/CTF departments before transferring to The Learning Connection. In 2019, she transferred to Pine Grove, where she was the Learning Support Teacher, taught in the Math and Physical Education departments, and became one of the Assistant Principals in 2021. Amanda has a Bachelor of Science Degree and a Bachelor of Education Degree from the University of Ontario Institute of Technology. She then earned her Graduate Certificate in Supporting and Enhancing Student Mental Health, her Graduate Diploma in the Foundations of School Counselling, as well as her Master Degree focusing on the learning alliance from the University of Calgary. She is very passionate in helping students and staff members succeed and in achieving their goals.

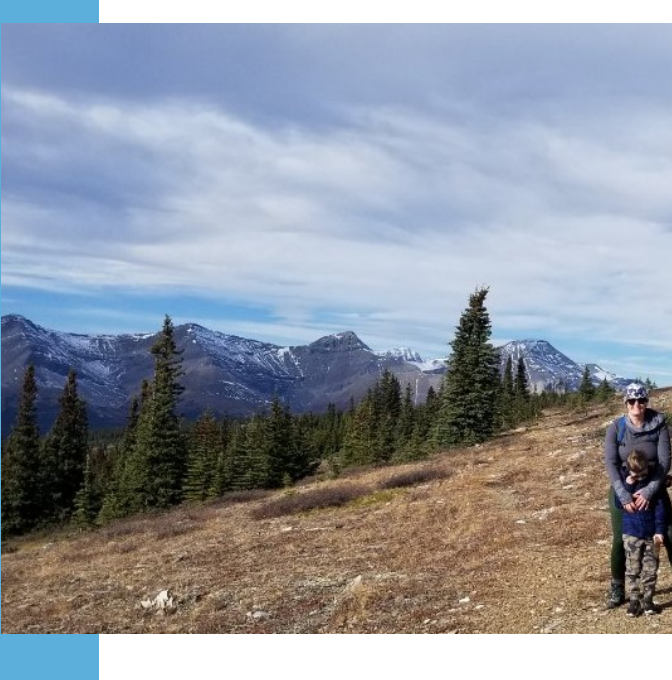


**Monica Sorensen**

Monica is thrilled to join Grande Yellowhead Public School Division as the Learning Support Teacher and Assistant Principal at Mary Bergeron Elementary in Edson. Monica is no stranger to this community, however. After graduating from the University of Alberta in 1997, she moved to Edson with her husband to start her teaching career. They decided to plant their roots in Edson and chose to raise their three children there. Monica has a Bachelor of Education degree and a Master of Science in Psychology degree. She has taught a wide range of grades and subjects from Grade 4 through to high school. She loves building connections with her students and how they teach her something new every day. When Monica is not at school, she looks forward to time spent with her family, spending time in nature, and traveling.

**Kristin Basaraba**

An alumni of the University of Alberta, Kristin started her teaching career at Parkland Composite High School in 2016. Kristin served in the role as an Academic Advisor in Parkland's Pacer Success Centre for six years, held a leadership role in the development of Parkland's in-house virtual learning program, as well as teaching various subjects encompassing English, Social Studies, and various CTS courses. In the past few years, Kristin has completed her E-Learning Certificate in online program development, is a certified Hapara Champion Trainer, and will complete her Graduate Certificate in Leadership Studies in 2024. At the end of the 2022/23 school year, Kristin stepped into the Assistant Principal position at Parkland, and is currently a member of the Dual Campus leadership team for Parkland and École Pine Grove. Outside of work, Kristin enjoys spending time with her family, traveling, and fundraising for the Stollery Children's Hospital Foundation. Kristin is passionate about rural education and believes that every student deserves an opportunity to achieve success.



**Michelle Downing**

After graduating from the University of Alberta, Michelle began her teaching career in a specialized classroom setting. She has taught a variety of ages and subject areas including several years in elementary school and most recently Math 9. She has also supported teachers and administration at the division level as an inclusive education coach and Supervisor of Instruction focusing on literacy and numeracy. Michelle has a Bachelor of Education degree as well as a Master of Arts in Integrated Studies with a dual focus on adult education and educational studies. When not at school, you can find Michelle spending time with family and friends, reading, exploring the outdoors, or cooking and baking. Michelle is proud to be part of the dual campus team for Pine Grove and Parkland and enjoys working with the learning community to support their success.

**Ryan Hall**

After graduating from the University of Alberta, Ryan began his teaching career at École Pine Grove in the spring of 2005. That fall, he moved across the parking lot to Parkland Composite High School to teach at his former high school. Along with his administrative duties, Ryan has taught a variety of subjects over the years from social studies, computers, and outdoor education, though his primary area is mechanics and fabrication. When he isn't at school, Ryan can be found enjoying the outdoors or in the seat of a tractor on his family farm east of town. Ryan is proud to be part of the Dual Campus team for Parkland and École Pine Grove and enjoys working with students to inspire them to enter the skilled trades sector.



**Shyla Locke**

Shyla is thrilled to be joining both Pine Grove Middle School and Parkland Composite High School as Assistant Principal and the Indigenous Pathways lead teacher this school year. Shyla worked previously as a social worker but decided to switch gears and completed her undergraduate degree of a Bachelor of Secondary Education majoring in French and Physical Education from the University of Alberta. Shyla began teaching in 2012 in Fort McMurray as a French immersion junior high Humanities and Physical Education teacher and a soccer academy coach. After three years up north, Shyla moved south with her husband and dog and began teaching French immersion middle school and then later on high school French Language Arts, Études Sociales and became the Modern Languages Department leader with Rocky View Schools in Airdrie. Shyla started her Master degree at the University of Calgary in Educational Leadership in 2017 while pregnant with her son and then completed her degree in 2020 just before having her second son ( She also has a daughter who was born in 2022). Shyla's thesis during her graduate degree was focused on French immersion attrition rates at the high school level but has found value in the research she completed as it is transferable across all subject areas and grade levels. Shyla is passionate about second language acquisition and truth and reconciliation and is excited to share her knowledge and skill set with the Pine Grove and Parkland team!